

Increase Part Life & Performance

Manufactured for bulk handling, forestry, mining, and transportation, Redco™ Bushings & Bearings are built from durable polymer alloys that can outperform traditional brass, bronze, & Babbitt bearings.

Whether your application contains shocks, vibrations, extreme temperatures, high pressure, high velocity, or chemicals, Redco™ Bushings & Bearings deliver high-quality performance no matter the situation. For more information about Redco™ Bushings & Bearings, or to request a quote for your business, contact us today.

Key Features

- + Self-lubricating to help reduce friction and wear
- + Exceptional wear life and durability
- + Excels in low/freezing temperatures; resists temperatures as low as -80°F
- + Excellent shock & impact absorption
- + Eliminates grease contamination & damage
- + Available in multiple material types (see following pages)



Self-Lubricating



Exceptional
Wear Life



Corrosion
Resistant



Resists cold
up to -80°F

Redco™ Bushings & Bearings Materials

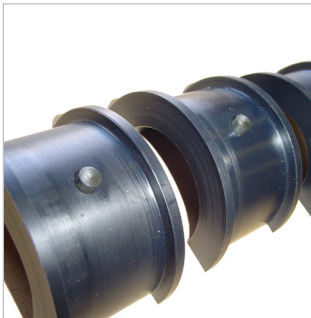
When it comes to using plastics for various applications, it may be difficult to determine which material to use. Below is a quick overview as to which plastic type is best suited for certain environments.



Redco™ Polyurethanes

For applications where shock, vibration, impact, and lower or freezing temperatures are of concern. Urethane is the superior option here due to its elasticity.

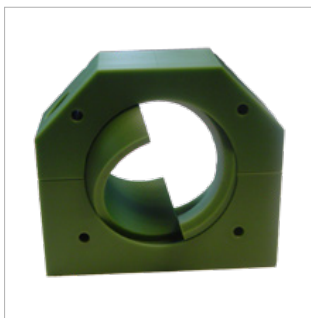
- Absorbs 1.3% moisture.



Redco™ Polyurethane 750 / 750 XL / SXL

Typically used as: hourglass bearings, sprocket bushings, kicker arm bushings, pivot bearings, SN insert bearings, rollers, barker bearings, and hanger bearings.

- Maximum PSI: Approx. 2500.



Redco™ Cast Nylons

For applications of higher velocity, pressure, and ambient temperature (poor against the cold and impact). Typically used as: kiln bearings, pivot bearings, sheaves, winch bushings, tail shaft bearings, and hanger bearings.

- Maximum PSI: Approx. 4000.
- Absorbs 3% moisture.



Redco™ Phenolics

For applications where heat, cold, high pressure, and velocity are of concern. Typically used as: press roll bushings, mitre box bushings, sheave bearings, high-load kiln bearings (30,000+), boom pivot bearings, and barker bearings.

- Maximum PSI approx. 10,000.
- Absorbs 1% moisture.



Redco™ PTFE

For applications where extreme heat, harsh chemicals, moisture, and corrosion are of concern. Typically used as: veneer dryer bearings, non-stick rollers, food handling, and chemical parts.

- Maximum PSI approx. 500, dependent on additives.
- Absorbs no moisture.



Redco™ UHMW

For applications containing light loads, chemicals, cold, and some impact. Typically used as skate wheels, light duty bearings, and food and chemical parts.

- Maximum PSI approx. 500-800, dependent on additives.
- Absorbs no moisture.

Note: Plastic Clearance/Tolerance is subject to many variables such as moisture, cold, and heat when being machined for specific applications. If lubrication is supplied to a plastic bearing, the load and life are greatly increased dependent on the type and volume of lubricant.