



## Redco™ Drive Couplers

When a motor starts, an enormous amount of torque is generated from the driving machine that is then transferred to other parts of the machine. However, the constant torque generated from this process can cause damage to shafts, bearings, and the motor itself. Without a proper way for the torque to transfer to all parts effectively, your machine could deteriorate more quickly than you would expect.

Our Redco™ Drive Couplers are able to help. With the insert's elastomer components, our couplers are able to bend or twist in correspondence with the motor's torque, allowing the insert to absorb most of the torque and enabling the whole apparatus to catch up and distribute the energy evenly across all parts.

We make these couplers in-house in our manufacturing facility. Our experts can help you determine the right insert for your machinery.

### COUPLER ELEMENTS

20 Element:	#1962638
30 Element:	#1962646
40 Element:	#1962653
50 Element:	#1962661
60 Element:	#1962679
70 Element:	#1962687
80 Element:	#1962695
90 Element:	#1962703

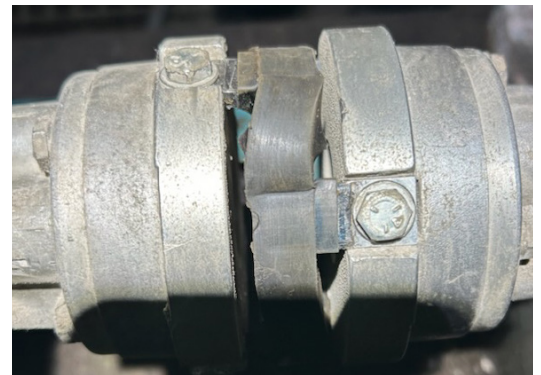
## CASE STUDY - PULP MILL

A very trusted and successful pulp mill use these Drive Couplers for a lot of their machinery. When they needed replacements, they wanted a credible partner that could supply these parts. They contacted their local representative to see if we have the expertise and tools to manufacture their Drive Couplers.

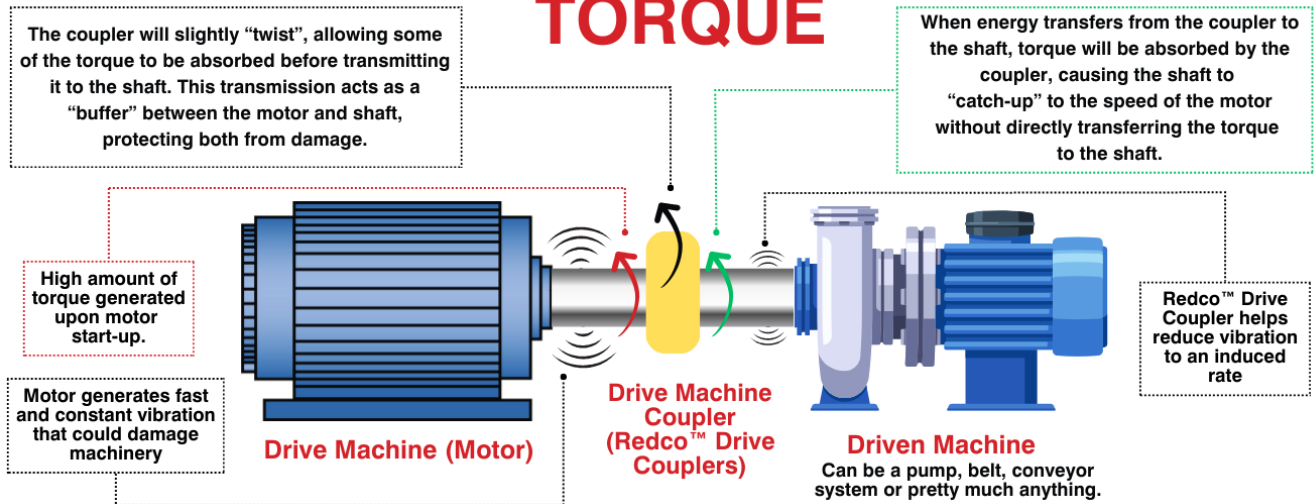
We got to work immediately. We had our teams work with our customer to ensure all measurements, concerns and costs were addressed. After a sophisticated and long process, we successfully manufactured Drive Couplers that capture the key benefits of the original.

We are now able to manufacture these Drive Couplers more easily and quickly for any customer. Contact us to learn more.

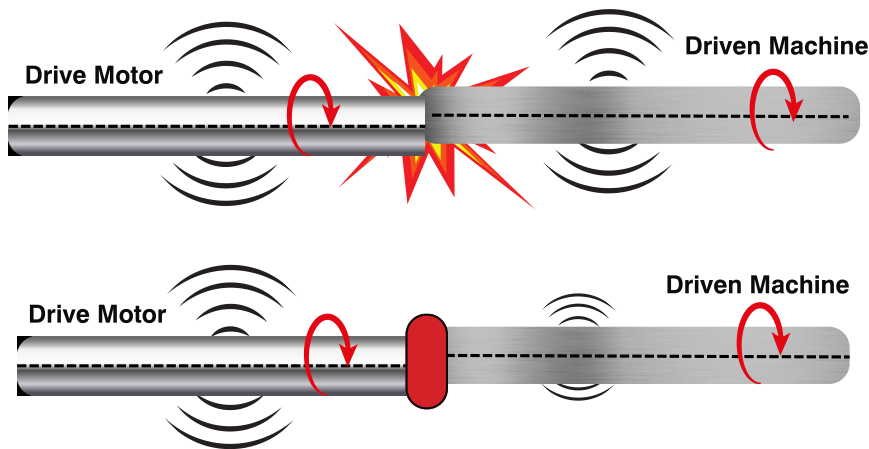
***Back page illustrates how our Drive Couplers work***



### TORQUE



### ALIGNMENT



The shafts are connected directly without a coupler and are slightly off-center. This causes the shaft of the Driven Machine to spin out of alignment with the Drive Shaft, likely resulting in damage to both parts.

The coupler acts as a buffer that reduces vibration throughout the machinery and allows the driven shaft to spin somewhat evenly despite the two shafts not being perfectly aligned.

Shaft alignment should be corrected, but the coupler will allow both shafts to spin without catastrophic failure.

## ABOUT US

From a small shop on Redwood street to a multinational manufacturer, Redwood Plastics and Rubber has been crafting, manufacturing, and supplying solutions that address wear, noise, abrasion, impact and corrosion issues across industries for over 50 years.

Our in-house manufacturing capabilities and large-scale facilities can produce reliable plastic and rubber components that decrease downtime, boost production and improve safety.

