



MORE THAN SHEET, ROD & TUBE FABRICATION AND MACHINING SERVICES IN EVERY LOCATION

Our custom plastic and rubber fabrication shops are fully equipped and we have trained and experienced machinists to produce quality parts from many types of plastic and rubber materials.

From intricate parts to simple cut-to-size projects, we can help you select the most optimal material for your application and produce the final parts in a timely manner.

We can design, mold, machine, weld, route, and drill to produce prototypes, short runs, production runs or maintenance parts. Save time and money by utilizing our experienced fabricators and plastic and rubber specialists.

ASK
AN
EXPERT

www.redwoodplastics.com
1 833 381 1195
sales@redwoodplastics.com



REDCO™ NYLON

One of our most durable materials with a low coefficient of friction and six times lighter than steel - perfect for a vast array of applications.



- ABSORBS NOISE
- HIGH LOAD CAPACITY
- CORROSION RESISTANT
- ABSORBS IMPACT
- MINIMIZE MAINTENANCE
- OUTSTANDING DURABILITY
- CHEMICAL RESISTANCE
- ELIMINATE GALLING
- HIGH TENSILE STRENGTH
- SELF LUBRICATING
- FDA, USDA & CFIA GRADES





REDCO™ NATURAL ○

Redco™ Nylon Natural offers the excellent abrasion resistance and dimensionally stable qualities inherent of all cast nylon grades. In addition, Redco™ Natural is U.S.A F.D.A approved making it ideal for components in the food processing industry.

STANDARD COLOR: Natural (White)

TYPICAL APPLICATIONS:

Wear strip, channel, diverter arms, bearing blocks, scraper blades, wear rails, star wheels, chute liners, hopper liners, bunk pads, slider blocks, light duty pulleys, dock fenders/pads, metal detector troughs, trimmer lugs, sprockets, conveyor flights, wear shoes/guides, forklift hose sheaves, rollers, hold down wheels, slides, cutting boards, outrigger pads, etc.



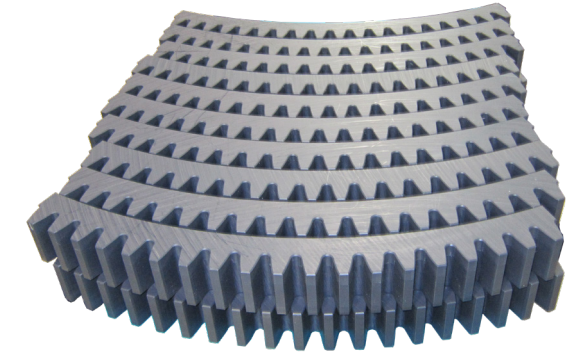
REDCO™ MD ●

Redco™ Nylon MD is a moly-filled (molybdenum disulphide filled) grade resulting in superior wear-resistance allowing for longer part life and decreased mating component wear, resulting in less downtime.

STANDARD COLOR: Dark Grey

TYPICAL APPLICATIONS:

Sheaves used in the mobile crane industry, bushings, wear pads for telescoping booms, as well as gears and rollers found in numerous material handling systems, etc.



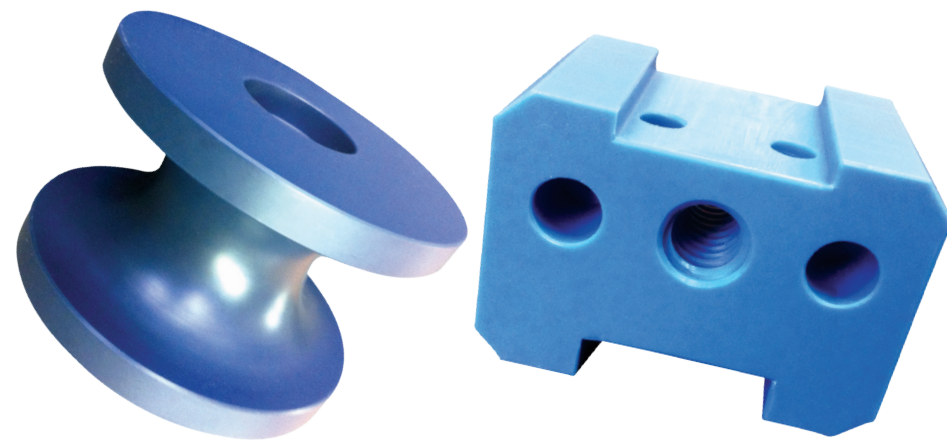
REDCO™ BLUE ●

Redco™ Nylon Blue was formulated to maintain dimensional stability in applications with higher continuous operating temperatures.

STANDARD COLORS: Blue

TYPICAL APPLICATIONS:

Bushings, rollers, wear pads, wear strips, wheels, gears, and custom components.



REDCO™ NYLON OIL ●

A special formulation of liquid lubricant is encapsulated during manufacturing providing lubrication at the bearing surface. Redco™ Nylon Oil is offered for applications where maintenance lubrication is difficult or impossible.

Redco™ Nylon Oil also limits moisture absorption, making Redco™ Nylon Oil an ideal bearing material for submerged or critical tolerance applications. This grade is also available in Redco™ Nylon Natural Oil for food and beverage applications and is U.S.A, F.D.A compliant.

STANDARD COLOR: Olive Green

TYPICAL APPLICATIONS:

Bearings, bushings, bottling, canning, packing, processing, friction and wear applications in marine environments, gears, sprockets and power transmission components.



REDCO™ MD OIL ●

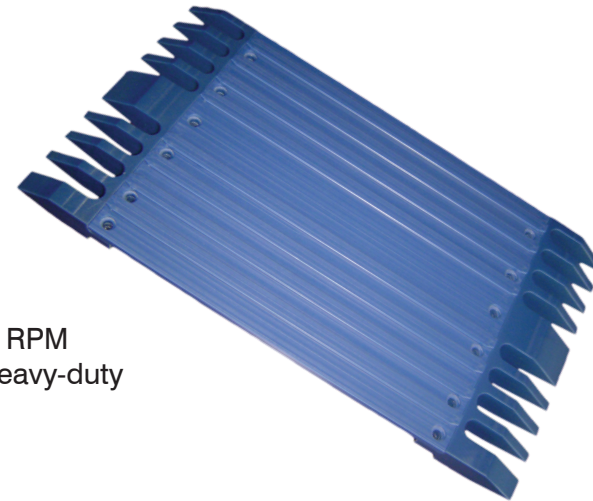
Redco™ Nylon MD-Oil filled is one of the most versatile standard grades of Redco™ Cast Nylon. Redco™ Nylon MD-Oil provides the same high compressive strength and load bearing properties of MD filled, with all the advantages of a liquid lubricant.

Redco™ Nylon MD-Oil is especially suited for high load - low RPM applications, but is a superior replacement for MD in many heavy-duty friction generating applications.

STANDARD COLOR: Dark Navy Blue

TYPICAL APPLICATIONS:

Pillow blocks, trunnion bearings, rope sheaves, pulleys, sprockets, slipper pads, dryer bushings, and custom components.



REDCO™ SL ●

Redco™ Nylon SL offers a lower dynamic coefficient of friction with superior wear resistance. Redco™ Nylon SL is used for complex applications where external lubrication is difficult or impossible. Also providing in excess of 5 times longer part life than other lubricated materials.

Redco™ Nylon SL offers significant savings in machine maintenance and downtime costs. As well, it provides added assurance of part life in friction applications where other cast nylons may fail.

STANDARD COLORS: Light Grey

TYPICAL APPLICATIONS:

Wear strips, bearings / bushings, abrasion pads, rollers, guide rails, star wheels (bottling plants), valve seats, and custom components.



TUFFKAST ●●●●

Redco™ Tuffkast has a combination of strength and resilience resulting in a high performance plastic that offers excellent wear and abrasion resistance with rigidity, minimal water absorption and superior impact values. Ideal for harsh environments where excessive weight, water saturation, abrasion, shock, and impact are factors.

REDCO™ TUFFKAST 025:

Redco™ Tuffkast displays high load and strength resistance with excellent tensile properties. For use in environments with shock, abrasion, vibration, impact, moisture, and absorption.

REDCO™ TUFFKAST 015 (Oil Filled):

Using the same process as our Redco™ Nylon Oil, the impregnated liquid lubrication offers excellent surface lubricity. For use in environments with high wear, increased abrasion, and where moisture is a concern.

REDCO™ TUFFKAST 010 (Solid Lubricant):

The impact resistance of the Redco™ Tuffkast with the wear resistance of Redco™ SL (solid lubricant) resulting in the longest lasting material for the most aggressive industrial applications. For use in environments with extreme wear and abrasion.

REDCO™ TUFFKAST 020:

Developed for applications requiring exceedingly high impact resistance, such as carriage wheels.

TYPICAL APPLICATIONS:

Wear Plates, dock fenders/pads, valve seals, sprockets, bearings, bushings, sheaves, washers, spacers, insulators, clevis pins, ring gears, barker parts, canter parts, carriage parts, gland bushings, sliding bearings, chip-n-saw parts, forklift mast slides, log handling parts, bushings for cylinders, tubes, and custom components.



REDCO™ PVM ●

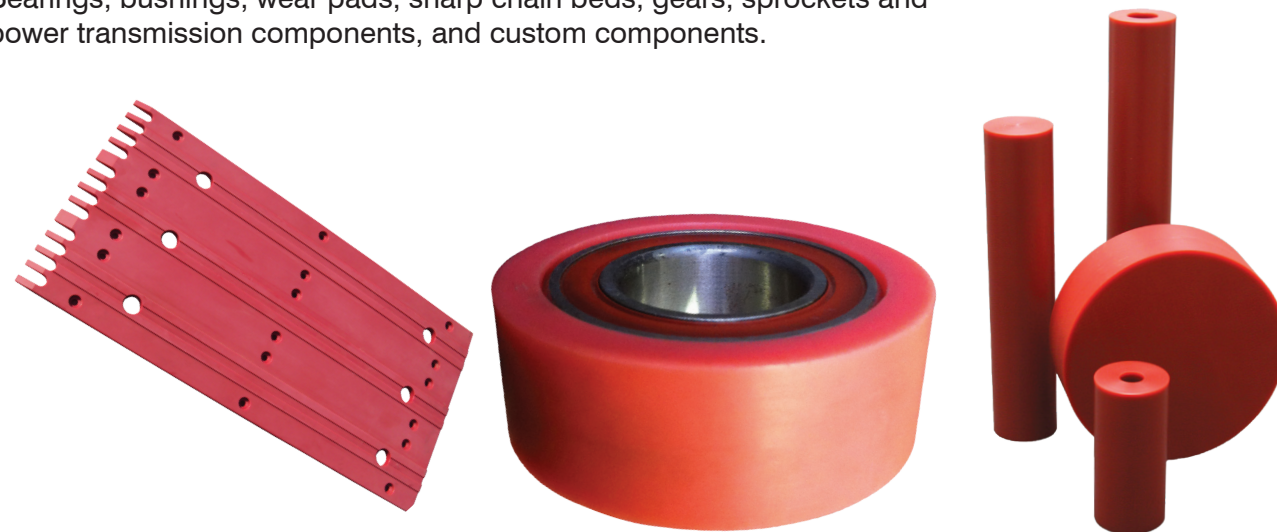
Redco™ PVM (pressure/velocity/maximum) was developed to provide a premium material for a variety of applications. Redco™ PVM is a self lubricated material with a low coefficient of friction that can increase the life of equipment.

Redco™ PVM offers exceptional PV (pressure x velocity) values resulting in an excellent material for tough load bearing/frictional applications.

STANDARD COLOR: Red

TYPICAL APPLICATIONS:

Bearings, bushings, wear pads, sharp chain beds, gears, sprockets and power transmission components, and custom components.



REDCO™ GLASS FILLED ○●

Redco™ Glass Filled Nylon offers increased strength, wear, stiffness, creep resistance, and dimensional stability from standard nylon. It also possesses a higher short-term temperature resistance. This grade is often used in prototype and development work where injection molded parts would be cost prohibitive.

STANDARD COLOR: White and Black

Typical Applications:

Applications where stiffness, rigidity, and dimensional stability is a concern, such as seals.

REDCO™ EXTRUDED ○●

The First Nylon available in sheet, rod and tube, Redco™ Extruded (6/6 Nylon) is the most widely used of the Nylons. Redco™ Extruded offers the highest rigidity, compressive strength and melting point of any unmodified extruded Nylon.

STANDARD COLOR: Natural (White) and Black

Typical Applications:

Limit Switch, Bearings, Bushings, Sheaves, Rollers, Guides, Wear Plates, Threaded Parts, Sprockets, Power Transmission



REDCO™ POWER 6 ●

Redco™ Power-6 offers the load bearing capacity of steel with the abrasion resistance, wear resistance and noise reduction of nylon. In demanding applications where the load bearing capability of steel is required, such as a keyway in a sprocket, Power-6 is the answer.

Redco™ SL, Redco™ Oil, Redco™ Tuffkast (010, 015, 020, 025), or standard grades can be fabricated with a variety of core materials, including aluminum, mild steel, stainless steel, bronze and more, to suit any application.

STANDARD COLOR: Varies

TYPICAL APPLICATIONS:

Drive gears and sprockets, high load rollers, and wheels.

