



REDCO™ BUSHINGS & BEARINGS

Durable & Dependable Redco™ Products

Designed for bulk handling, forestry, mining, and transportation, Redco™ Plastic Bushing & Bearing materials are built from durable polymer alloys that can outperform traditional brass, bronze, & Babbitt bearings.

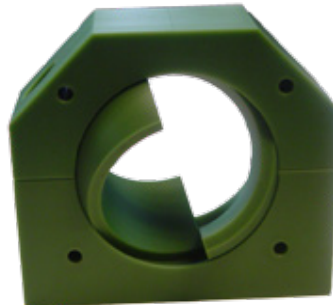


Redco™ Superkast 750 Bearings

Redwood offers a wide range of bearing materials that will deliver reliable, high-quality performance no matter the situation. Whether your application contains shocks, vibrations, extreme temperatures, high pressure, high velocity, or chemicals, Redco Bushings & Bearings deliver durability and dependability.



Redco™ Double-flanged 750SXL Bushing



Redco™ Nylon Split Bearing



Corrosion Resistant



Self-Lubricating



Absorbs Impacts



Resists cold up to -80°F



Exceptional wear life

Materials	When to Use
Redco™ Polyurethanes	Applications where shock, vibration, impact and lower or freezing temperatures are of a concern. Urethane is the superior option here due to its elasticity.
Redco™ Polyurethane 750/750 XL/SXL	Typically used as: hourglass bearings, sprocket bushings, kicker arm bushings, pivot bearings, SN insert bearings, and hanger bearings. Maximum PSI approx. 2500
Redco™ CAST NYLONS	Applications of higher velocity, pressure, and ambient temperature (poor against the cold and impacts). Typically used as: kiln bearings, pivot bearings, sheaves, winch bushings, tail shaft bearings, and hanger bearings. Maximum PSI approx. 4000
Redco™ DELRIN	Similar to nylon with less moisture absorption and a slightly harder texture. Maximum PSI approx. 4000

**ASK AN
EXPERT**

www.redwoodplastics.com
CDN 1-800-667-0899 USA 1-866-733-2684
sales@redwoodplastics.com



More than Sheet, Rod & Tube

Materials	When to Use
<p>Redco™ PHENOLICS</p>	<p>Applications where heat, cold, high pressure, and velocity are of concern.</p> <p>Typically used as: Press roll bushings, mitre box bushings, sheave bearings, high-load kiln bearings (30 000+), boom pivot bearings, and barker bearings.</p> <p>Maximum PSI approx. 10,000</p>
<p>Redco™ TEFLONS</p>	<p>Applications where extreme heat (300+°F), harsh chemicals, moisture and corrosion are of concern.</p> <p>Typically used as: Veneer dryer bearings, non-stick rollers, food handling and chemical parts.</p> <p>Maximum PSI approx. 500, depending on additives.</p>
<p>Redco™ UHMW</p>	<p>Generally used in applications with light loads, chemicals, cold, some impact.</p> <p>Typically used as: skate wheels, light duty bearings, food & chemical parts.</p> <p>Maximum PSI approx. 500-800, depending on additives.</p>



**ASK AN
EXPERT**

www.redwoodplastics.com
CDN 1-800-667-0899 USA 1-866-733-2684
sales@redwoodplastics.com



More than Sheet, Rod & Tube