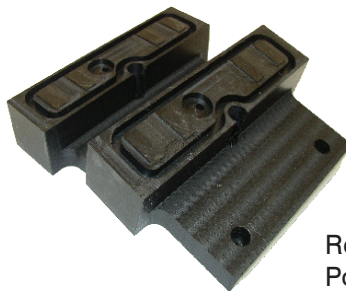


PROPERTY	TYPICAL VALUES	ASTM or UL TEST
----------	----------------	-----------------

PHYSICAL		
DENSITY, g/cm <sup>3</sup>	0.930 - 0.940	ASTM D 792
HARDNESS, ROCKWELL R SCALE	64 - 68	ASTM D 785
DUROMETER (D/15)	68 - 72	ASTM D 2240

MECHANICAL		
TENSILE PROPERTIES		ASTM D 638
MAXIMUM STRENGTH, psi	3,500 - 5,200	2 in./min
MPa	24 - 36	
YIELD STRENGTH, psi	2,500 - 3,100	
MPa	17 - 21	
MODULUS, psi	100,000 - 150,000	
MPa	689-1083	
ELONGATION AT BREAK, %	200 - 400	
FLEXURAL MODULUS, psi	100,000 - 150,000	ASTM D 790
MPa	689-1083	
IZOD IMPACT STRENGTH AT 23°C, ft-lbs/in <sup>2</sup> (KJ/m <sup>2</sup> )		
NOTCHED	No break	ASTM D 256A
MEAN CO-EFFICIENT OF LINEAR THERMAL EXPANSION PER °C	2 x 10 <sup>-4</sup>	ASTM D 696
CO-EFFICIENT OF FRICTION AGAINST CR-PLATED STEEL AT 23°C		ASTM D 1894
STATIC	.20 - .30	
DYNAMIC	.14 - .18	
ABRASION INDEX (RELATIVE TO STEEL AT 100)	9 -11	Sand Slurry

TEMPERATURE		
OPERATING TEMPERATURE RANGE		Internal
MAXIMUM CONTINUOUS, °F (°C)	180 (82)	
MINIMUM CONTINUOUS, °F (°C)	-150 (-101)	



Redco™ UHMW Vacuum  
Pods for CNC Router

We cannot anticipate all conditions under which this information and our products, or the products of other manufacturers in combination with our products, may be used. We accept no responsibility for results obtained by the application of this information or the safety and suitability of our products, whether alone or in combination with other products. Users are advised to make their own tests to determine the safety and suitability of each such product or product combination for their own purposes. Unless otherwise agreed in writing, we sell the products without warranty, and buyers and users assume all responsibility and liability for loss or damage arising from the handling and use of our products, whether used alone or in combination with other products. For most recent technical information, phone in USA or in Canada.