

# REDCO™ NYLON



**OUTLASTING**

**OUTPERFORMING**

**ELIMINATE GALLING**

**REDUCE ABRASION WEAR**

**REDUCE LUBRICATION REQUIREMENTS**

**HIGH TENSILE & LOAD BEARING STRENGTH**



## REDCO™ NATURAL

Redco™ Nylon Natural offers the excellent abrasion resistance, and dimensionally stable qualities inherent of all cast nylon grades. In addition, Redco™ Natural is U.S.A F.D.A approved making it ideal for components in the Food Processing Industry.

- STANDARD COLOR: Natural (white)
- STANDARD SHEET SIZE: 2'x4', 3'x4', 4'x4', 4'x10'
- STANDARD ROD LENGTH: 2' or 4'
- STANDARD TUBE LENGTH: 52"
- STANDARD SHEET THICKNESSES: 1/4" to 3"
- STANDARD ROD DIAMETER: 2"-12"

Tubular Bar Available In Custom O.D. And I.D. Combinations

Typical Applications:  
Food applications, bearings, rollers, and custom components.

## REDCO™ BLUE

Redco™ Nylon Blue was formulated to maintain dimensional stability in applications with higher continuous operating temperatures.

- STANDARD COLOR: Blue
- STANDARD SHEET SIZE: 2'x4', 3'x4', 4'x4', 4'x10'
- STANDARD ROD LENGTH: 2' or 4'
- STANDARD TUBE LENGTH: 52"
- STANDARD SHEET THICKNESSES: 1/4" to 3"
- STANDARD ROD DIAMETER: 2"-12"

Tubular Bar Available In Custom O.D. And I.D. Combinations

Typical Applications:  
Bushings, rollers, wear pads, wear strips, wheels, gears, and custom components.





## REDCO™ MD

Redco™ Nylon MD is a moly-filled (molybdenum disulphide filled) grade resulting in superior wear-resistance allowing for longer part life and decreased mating component wear, resulting in less down time.

- STANDARD COLOR: Dark Grey
- STANDARD SHEET SIZE: 2'x4', 3'x4', 4'x4', 4'x10'
- STANDARD ROD LENGTH: 2' or 4'
- STANDARD TUBE LENGTH: 52"
- STANDARD SHEET THICKNESSES: 1/4" to 3"
- STANDARD ROD DIAMETER: 2"-12"

Tubular Bar Available In Custom O.D. And I.D. Combinations

### TYPICAL APPLICATIONS:

Sheaves used in the mobile crane industry, bushings, wear pads for telescoping booms, as well as gears and rollers found in numerous material handling systems, etc.

## REDCO™ OIL

A special formulation of liquid lubricant is encapsulated during manufacturing providing lubrication at the bearing surface. Redco™ Nylon Oil is offered for applications where maintenance lubrication is difficult or impossible.

Redco™ Nylon Oil also limits moisture absorption, making Redco™ Nylon Oil an ideal bearing material for submerged or critical tolerance applications. This grade is also available in Redco™ Nylon Natural Oil for food and beverage applications and is U.S.A, F.D.A compliant.

- STANDARD COLOR: Olive Green
- STANDARD SHEET SIZE: 2'x4', 3'x4', 4'x4', 4'x10'
- STANDARD ROD LENGTH: 2' or 4'
- STANDARD TUBE LENGTH: 52"
- STANDARD SHEET THICKNESSES: 1/4" to 3"
- STANDARD ROD DIAMETER: 2"-12"

Tubular Bar Available In Custom O.D. And I.D. Combinations

### TYPICAL APPLICATIONS:

Bearings, bushings, bottling, canning, packing, processing, friction and wear applications in marine environments, gears, sprockets and power transmission components, etc.



## REDCO™ MD OIL

Redco™ Nylon MD-Oil filled is one of the most versatile standard grades of Redco™ Cast Nylon. Redco™ Nylon MD-Oil provides the same high Compressive Strength and Load Bearing properties of MD filled, with all the advantages of a liquid lubricant.

Redco™ Nylon MD-Oil is especially suited for high load - low RPM applications, but is a superior replacement for MD in many heavy-duty friction generating applications.

- STANDARD COLOR: Dark Navy Blue
- STANDARD SHEET SIZE: 2'x4', 3'x4', 4'x4', 4'x10'
- STANDARD ROD LENGTH: 2' or 4'
- STANDARD TUBE LENGTH: 52"
- STANDARD SHEET THICKNESSES: 1/4" to 3"
- STANDARD ROD DIAMETER: 2"-12"

Tubular Bar Available In Custom O.D. And I.D. Combinations

### TYPICAL APPLICATIONS:

Pillow blocks, trunnion bearings, rope sheaves, pulleys, sprockets, slipper pads, dryer bushings, and custom components.

## REDCO™ SL

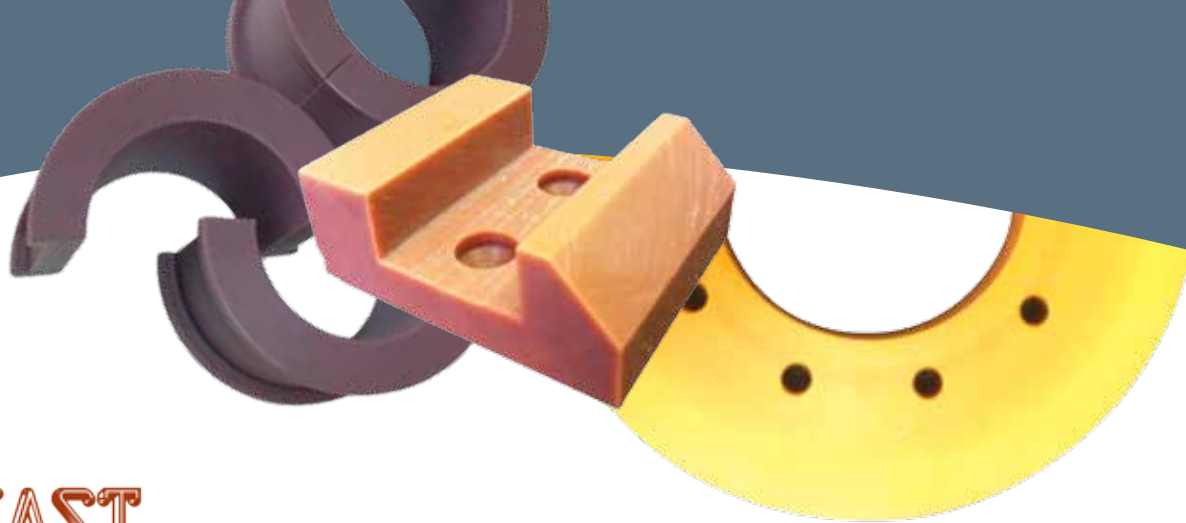
Redco™ Nylon SL offers a lower dynamic coefficient of friction with superior wear resistance. Redco™ Nylon SL is used for complex applications where external lubrication is difficult or impossible. Also providing in excess of 5 times longer part life than other lubricated materials. Redco™ Nylon SL offers significant savings in machine maintenance and down time costs. As well, it provides added assurance of part life in friction applications where other cast nylons may fail.

- STANDARD COLOR: Light Grey
- STANDARD SHEET SIZE: 2'x4', 3'x4', 4'x4', 4'x10'
- STANDARD ROD LENGTH: 2' or 4'
- STANDARD SHEET THICKNESSES: 1/4" to 3"
- STANDARD ROD DIAMETER: 2"-12"

Tubular Bar Available In Custom O.D. And I.D. Combinations

### Typical Applications:

Wear strips, bearings / bushings, abrasion pads, rollers, guide rails, star wheels (bottling plants), valve seats, and custom components.



## TUFFKAST

Redco™ Tuffkast has a combination of strength and resilience resulting in a high performance plastic that offers excellent wear and abrasion resistance with rigidity, minimal water absorption and superior impact values. Ideal for harsh environments where excessive weight, water saturation, abrasion, shock, and impact are factors.

### REDCO™ TUFFKAST 025:

Redco™ Tuffkast displays high load and strength resistance and with excellent tensile properties. For use in environments with shock, abrasion, vibration, impact, moisture, and absorption.

### REDCO™ TUFFKAST 015 (Oil Filled):

Using the same process as our Redco™ Nylon Oil, the impregnated liquid lubrication offers excellent surface lubricity. For use in environments with high wear, increased abrasion, and where moisture is a concern.

### REDCO™ TUFFKAST 010 (Solid Lubricant):

The impact resistance of the Redco™ Tuffkast with the wear resistance of Redco™ SL (solid lubricant) resulting in the longest lasting material for the most aggressive industrial applications. For use in environments with extreme wear and abrasion.

### REDCO™ TUFFKAST 020:

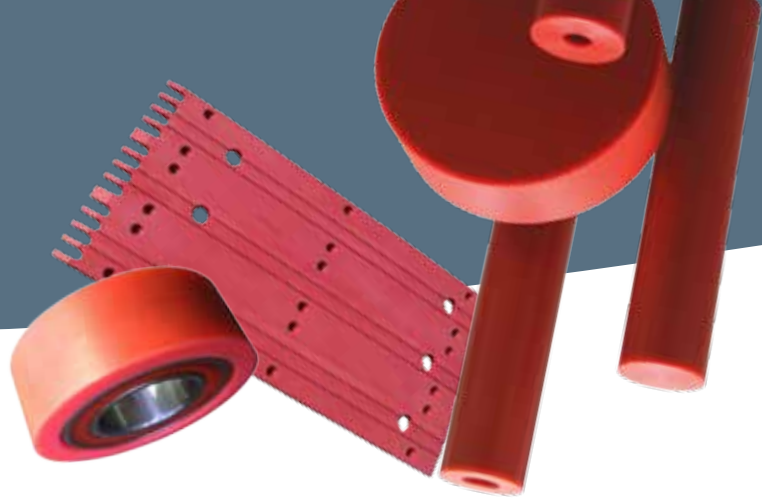
Developed for applications requiring exceedingly high impact resistance, such as carriage wheels.

- STANDARD COLOR: Yellow, Purple (010), Brown (015), and Orange (020)
- STANDARD SHEET SIZE: 2'x4', 3'x4', 4'x4', 4'x10'
- STANDARD ROD LENGTH: 2' or 4'
- STANDARD TUBE LENGTH: 52"
- STANDARD SHEET THICKNESSES: 1/4" to 3"
- STANDARD ROD DIAMETER: 2"-12"

Tubular Bar Available In Custom O.D. And I.D. Combinations

#### TYPICAL APPLICATIONS:

Wear Plates, dock fenders/pads, valve seals, sprockets, bearings, bushings, sheaves, washers, spacers, insulators, clevis pins, ring gears, barker parts, canter parts, carriage parts, gland bushings, sliding bearings, chip-n-saw parts, forklift mast slides, log handling parts, bushings for cylinders, tubes, and custom components.



## REDCO™ PVM

Redco™ PVM (pressure/velocity/maximum) was developed to provide a premium material for a variety of applications. Redco™ PVM is a self lubricated material with a low coefficient of friction that can increase the life of equipment.

Redco™ PVM offers exceptional PV (pressure x velocity) values resulting in an excellent material for tough load bearing/frictional applications.

- STANDARD COLOR: Red
- STANDARD SHEET SIZE: 2'x4', 3'x4', 4'x4', 4'x10'
- STANDARD ROD LENGTH: 2' or 4'
- STANDARD TUBE LENGTH: 52"
- STANDARD SHEET THICKNESSES: 1/4" to 3"
- STANDARD ROD DIAMETER: 2"-12"

Tubular Bar Available In Custom O.D. And I.D. Combinations

### TYPICAL APPLICATIONS:

Bearings, bushings, wear pads, sharp chain beds, gears, sprockets and power transmission components, and custom components.

## REDCO™ GLASS FILLED

Redco™ Glass Filled Nylon offers increased strength, wear, stiffness, creep resistance, and dimensional stability from standard nylon. It also possesses a higher short-term temperature resistance. This grade is often used in prototype and development work where injection molded parts would be cost prohibitive.

- STANDARD COLOR: White
- STANDARD SHEET SIZE: 2'x4', 3'x4', 4'x4', 4'x10'
- STANDARD ROD LENGTH: 2' or 4'
- STANDARD TUBE LENGTH: 52"
- STANDARD SHEET THICKNESSES: 1/4" to 3"
- STANDARD ROD DIAMETER: 2"-12"

Tubular Bar Available In Custom O.D. And I.D. Combinations

Custom formulations up to 35% glass filled.

### Typical Applications:

Applications where stiffness, rigidity, and dimensional stability is a concern, such as seals.



## REDCO™ EXTRUDED

The First Nylon available in sheet, rod and tube, Redco™ Extruded (6/6 Nylon) is the most widely used of the Nylons. Redco™ Extruded offers the highest rigidity, compressive strength and melting point of any unmodified extruded Nylon.

- STANDARD COLOR: Natural (White) and Black
- STANDARD SHEET SIZE: 2'x4', 4'x8', 4'x10'
- STANDARD ROD LENGTH: 3' or 10'
- STANDARD SHEET THICKNESSES: 3/8" to 2"
- STANDARD ROD DIAMETER: 1/4"-12"

Tubular Bar Available In Custom O.D. And I.D. Combinations

Typical Applications:

Limit Switch, Bearings, Bushings, Sheaves, Rollers, Guides, Wear Plates, Threaded Parts, Sprockets, Power Transmission Components, Plugs, Valves, Couplings, and custom components.

## REDCO™ POWER 6

Redco™ Power-6 offers the load bearing capacity of steel with the abrasion resistance, wear resistance and noise reduction of nylon. In demanding applications where the load bearing capability of steel is required; such as a keyway in a sprocket, Power-6 is the answer.

Redco SL, Redco Oil, or standard grades can be fabricated with a variety of core materials including; aluminum, mild steel, stainless steel, bronze, etc. to suit any application.

- STANDARD SIZES: 2" OD up to 20" OD
- CORE SIZE: 3/4" to 8" diameter

TYPICAL APPLICATIONS:

Drive gears and sprockets, high load rollers, and wheels.

# APPLICATIONS

Gears, Seals, Washers, Insulators, Sliding Bearings, Valves, Abrasion Pads, Power Transmission Components, Trunnion Bearings, Rope Sheaves, Pulleys, Slipper Pads, Dryer Bushings, Fittings, Tubes, etc.

## Wood Processing

Wear Plates, Sprockets, Bearings, Bushings, Washers, Spacers, Insulators, Clevis Pins, Barker Parts, Canter parts, Carriage Parts, Chip-n-saw Parts, Log Handling Parts, Gears, Stem Bushings, Bearing Blocks, Wear Strips, Rollers, Guide Rails, Trunnion Bushings

## Pulp & Paper

Bushings, Washers, Spacers, Insulators, Clevis Pins, Barker Parts, Gland Bushings, Sliding Bearings, Log Handling Parts, Valve Seals, Rings, Butterfly Valves, Bearing Blocks, Rollers, Guide Rails, Trunnion Bearings, Rope Sheaves, Slipper Pads, Fittings, Valve Seals

## Marine

Dock Fenders, Dock Pads, Washers, Spacers, Insulators, Clevis Pins, Sliding Bearings, Gears, Bearing Blocks, Wear Strips, Rollers, Guide Rails, Rope Sheaves, Pulleys

## Mining

Wear Plates, Bearings, Washers, Bushings, Spacers, Insulators, Clevis Pins, Sliding Bearings, Gears, Bearing Blocks, Wear Strips, Rollers, Guide Rails, Pulleys

## Food & Beverage Processing

Fittings, Pulleys, Guide Rails, Rollers, Wear Strips, Gears, Sliding Bearings, Spacers, Star Wheels, Pillow Blocks

## Agriculture

Star Wheels, Wear Plates, Sprockets, Gland Bushings,

## Material Handling

Pulleys, Rope Sheaves, Trunnion Bearings, Rollers, Wear Strips, Stem Bushings, Power Transmission Components, Forklift Mast Slides, Ring Gears, Gland Bushings, Wear Plates, Log Handling Parts

## Oil Drilling & Exploration

Fittings, Slipper Pads, Ball Valves, Rack Elements, Mast Guides, Crown Sheaves, Kelly Roller Bushings, Jack Beam Pads, Boom Arm Spacers, Track Guide Wheels, Drill Pipe Catwalk V-Door Wear Pads

**Application solutions are available for many other industries.  
Call us to speak to a Application Specialist.**



Custom Fabrication Available



Custom Colors & Sizes Available

For more information on Redco™ products please call:  
CDN 1 800 667 0999 US 1 866 733 2684

[sales@redwoodplastics.com](mailto:sales@redwoodplastics.com)  
[www.redwoodplastics.com](http://www.redwoodplastics.com)

