

Redco™ Outrigger Pads

Withstanding the Elements

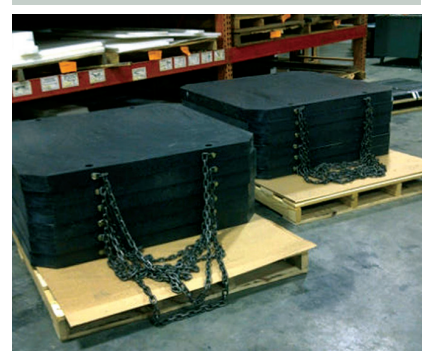
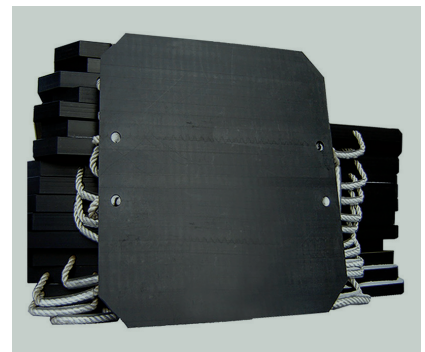
LOAD CAPACITY CHART - IMPERIAL

DIMENSIONS	WEIGHT	LOAD CAPACITY
INCHES	LBS	TON
SQUARE		
16" X 16" X 1 1/2"	14	10
20" X 20" X 1 1/2"	21	15
24" X 24" X 1 1/2"	30	20
28" X 28" X 1 1/2"	40	25
32" X 32" X 1 1/2"	54	25
40" X 40" X 1 1/2"	84	50
16" X 16" X 2"	18	10
20" X 20" X 2"	28	15
24" X 24" X 2"	40	25
32" X 32" X 2"	71	30
40" X 40" X 2"	112	55
16" X 16" X 2 1/2"	22	12
20" X 20" X 2 1/2"	35	20
24" X 24" X 2 1/2"	50	25
32" X 32" X 2 1/2"	89	35
40" X 40" X 2 1/2"	139	65
48" X 48" X 2 1/2"	200	85
32" X 32" X 3"	107	55
40" X 40" X 3"	167	70
48" X 48" X 3"	240	90
40" X 40" X 4"	222	80
48" X 48" X 4"	320	100
ROUND		
32" DIA X 2"	55	28
36" DIA X 2"	70	33
40" DIA X 2"	87	39
32" DIA X 2 1/2"	70	33
36" DIA X 2 1/2"	87	39
40" DIA X 2 1/2"	108	44
40" DIA X 3"	130	77
48" DIA X 3"	187	110
60" DIA X 4"	389	154

We cannot anticipate all conditions under which this information and our products, or the products of other manufacturers in combination with our products, may be used. We accept no responsibility for results obtained by the application of this information or the safety and suitability of our products, whether alone or in combination with other products. Users are advised to make their own tests to determine the safety and suitability of each such product or product combination for their own purposes. Unless otherwise agreed in writing, we sell the products without warranty, and buyers and users assume all responsibility and liability for loss or damage arising from the handling and use of our products, whether used alone or in combination with other products. For most recent technical information, phone 866 733 2684 in the USA or 800 667 0999 in Canada.



www.redwoodplastics.com



CAN 1.800.667.0999

USA 1.866.733.2684

Redco™ Outrigger Pads

Withstanding the Elements

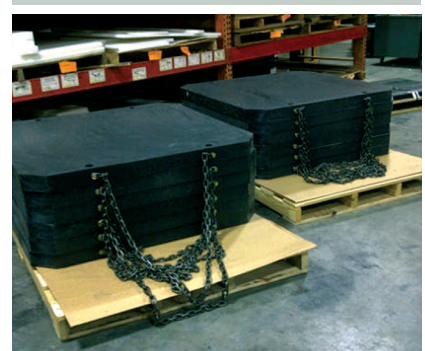
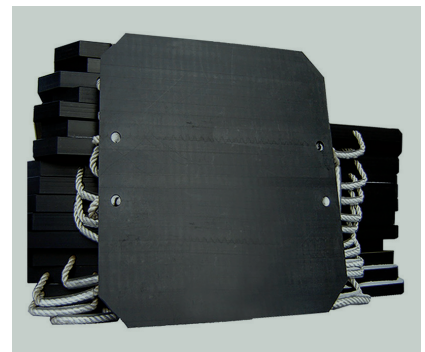
LOAD CAPACITY CHART - METRIC

DIMENSIONS	WEIGHT	LOAD CAPACITY
MM	KG	TONNE
SQUARE		
400 X 400 X 40	6.3	10
500 X 500 X 40	9.9	15
600 X 600 X 40	14.2	20
700 X 700 X 40	19.4	25
800 X 800 X 40	25.3	25
1000 X 1000 X 40.5	39.2	50
400 X 400 X 50	8	10
500 X 500 X 50	12.2	15
600 X 600 X 50	18	25
800 X 800 X 50	31.3	30
1000 X 1000 X 50	48	55
400 X 400 X 60	9.5	12
500 X 500 X 60	14.5	20
600 X 600 X 60	21.2	25
800 X 800 X 60	38.4	35
1000 X 1000 X 60	58.5	65
1200 X 1200 X 60	85	85
800 X 800 X 80	50.4	55
1000 X 1000 X 80	78	70
1200 X 1200 X 80	113	90
1000 X 1000 X 100	98	80
1200 X 1200 X 100	141	100
ROUND		
DIA 800 X 50	25	25
DIA 900 X 50	30	30
DIA 1000 X 50	38.5	35
DIA 800 X 60	30	30
DIA 900 X 60	37.5	35
DIA 1000 X 60	40	40
DIA 1000 X 80	61.5	70
DIA 1200 X 80	110	100
DIA 1500 X 100*	215	140

We cannot anticipate all conditions under which this information and our products, or the products of other manufacturers in combination with our products, may be used. We accept no responsibility for results obtained by the application of this information or the safety and suitability of our products, whether alone or in combination with other products. Users are advised to make their own tests to determine the safety and suitability of each such product or product combination for their own purposes. Unless otherwise agreed in writing, we sell the products without warranty, and buyers and users assume all responsibility and liability for loss or damage arising from the handling and use of our products, whether used alone or in combination with other products. For most recent technical information, phone 866 733 2684 in the USA or 800 667 0999 in Canada.



www.redwoodplastics.com



CAN 1.800.667.0999

USA 1.866.733.2684