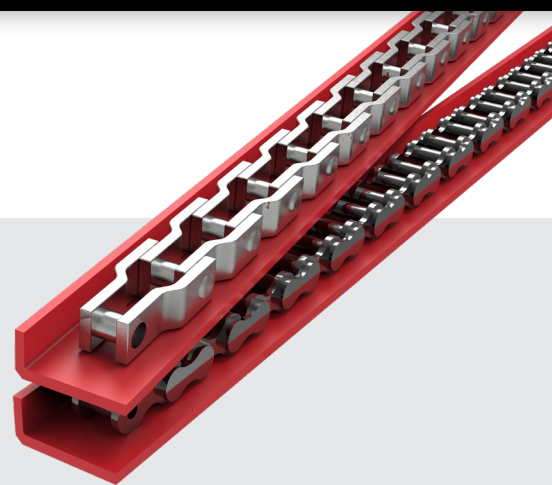


Redco™ 750 Channel/Angle

ENGINEERED FOR OSB FLAKE BINS

If UHMW channel or angle is being used to reduce chain and equipment wear and is bubbling, cracking or being replaced often due to heat, we have the perfect solution!

Redco™ 750 Chain Channel doesn't bubble, having a higher heat resistance, and lasts considerably longer which reduces maintenance and downtime. The channel can be molded to any size to suit any chain size or conveyor system configuration.



CORE ADVANTAGES:

- ▶ Exceptional resistance to high heat
- ▶ Long Lasting
- ▶ Reduce Maintenance
- ▶ Suits any chain size
- ▶ Reduces chain wear

sales@redwoodplastics.com | www.redwoodplastics.com

CAN 1.800.667.0999
USA 1.866.733.2684