



REDCO™

NYLON

OUTLASTING

OUTPERFORMING

Eliminate Galling • Reduce Lubrication Requirements • Improve Wear Resistance

Outstanding load bearing capabilities of up to 4000 psi.
Excellent wear resistance, self-lubricating, light weight
and a low coefficient of friction.



Sheet, Rod & Extrusions
Custom Fabrication

TUFFKAST



INNOVATIVE SOLUTIONS IN PLASTIC

CONTACT US TODAY
CDN 1-800-667-0999 USA 1-866-733-2684
www.redwoodplastics.com

SINCE 1971

High Load Bearing... Low Coefficient of Friction.... Self- Lubrication...



Light Weight... Easily Machined..... Corrosion Resistant...



Available Grades

REDCO™ NATURAL

Redco™ Nylon Natural offers the excellent abrasion resistance, and dimensionally stable qualities inherent of all cast nylon grades. In addition, Redco™ Natural is U.S.A F.D.A approved making it ideal for components in the Food Processing Industry.

STANDARD COLOR: Natural (white)

STANDARD SHEET SIZE: 2'x4', 3'x4', 4'x4', 4'x10' STANDARD SHEET THICKNESSES: 1/4" to 3"

STANDARD ROD LENGTH: 2' or 4' STANDARD ROD DIAMETER: 2"-12"

Tubular Bar Available In Custom O.D. And I.D. Combinations

TYPICAL APPLICATIONS:

Fittings, etc.

REDCO™ BLUE

Redco™ Nylon Blue was formulated to remain stable and maintain dimensional stability in applications with higher continuous operating temperatures.

STANDARD COLOR: Blue

STANDARD SHEET SIZE: 2'x4', 3'x4', 4'x4', 4'x10' STANDARD SHEET THICKNESSES: 1/4" to 3"

STANDARD ROD LENGTH: 2' or 4' STANDARD ROD DIAMETER: 2"-12"

Tubular Bar Available In Custom O.D. And I.D. Combinations

TYPICAL APPLICATIONS:

Bushings, rollers, wear pads and wear strips in ovens, kilns and industrial dryers, etc.

Custom Fabrication Available
Custom Colors & Sizes Available

Available Grades

REDCO™ MD

Redco™ Nylon MD is a chemically filled grade resulting in superior wear-resistance allowing for a longer part life, and decreased mating component wear, resulting in less down time.

STANDARD COLOR: Purple

STANDARD SHEET SIZE: 2'x4', 3'x4', 4'x4', 4'x10' STANDARD SHEET THICKNESSES: 1/4" to 3"

STANDARD ROD LENGTH: 2' or 4' STANDARD ROD DIAMETER: 2"-12"

Tubular Bar Available In Custom O.D. And I.D. Combinations

TYPICAL APPLICATIONS:

Sheaves used in the mobile crane industry, bushings, wear pads for telescoping booms, gears, and rollers found in numerous material handling systems, etc.

REDCO™ OIL

A special formulation of Liquid Lubricant encapsulated with the Redco™ Nylon material during manufacturing which provides lubrication at the bearing surface. Redco™ Nylon Oil is offered for applications where maintenance lubrication is difficult or impossible.

Redco™ Nylon Oil limits moisture adsorption, making Redco™ Nylon Oil an ideal bearing material for submerged or critical tolerance applications. This grade is also available in Redco™ Nylon Natural Oil for food and beverage applications.

STANDARD COLOR: Olive Green

STANDARD SHEET SIZE: 2'x4', 3'x4', 4'x4', 4'x10' STANDARD SHEET THICKNESSES: 1/4" to 3"

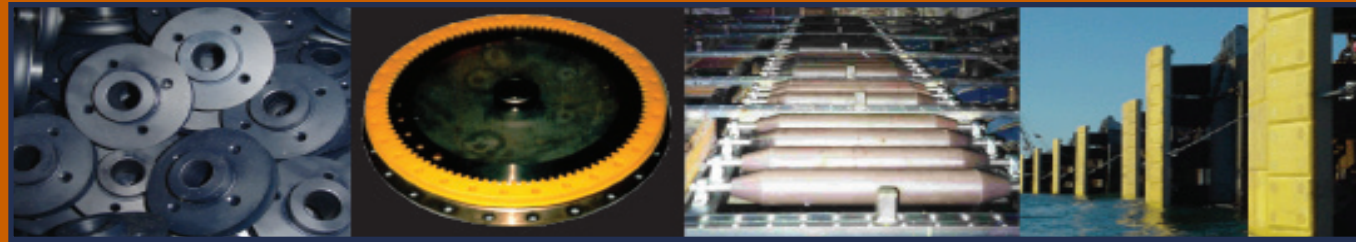
STANDARD ROD LENGTH: 2' or 4' STANDARD ROD DIAMETER: 2"-12"

Tubular Bar Available In Custom O.D. And I.D. Combinations

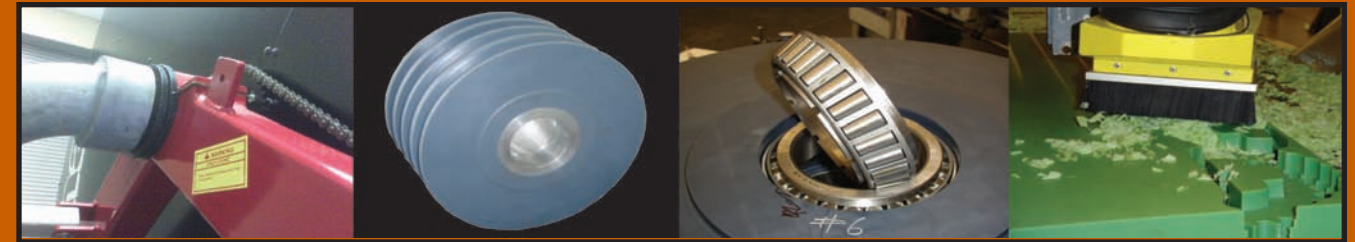
TYPICAL APPLICATIONS:

Bearings, bushings, bottling, canning, packing, processing, friction and wear applications in marine environments, gears, sprockets and power transmission components, etc.

Sound Dampening.... Reduce Maintenance Costs... Increase Production...



Abrasion Resistant... Eliminates Galling..... Wear Resistant...



Available Grades

REDCO™ MD OIL

Redco™ Nylon MD-Oil filled is one of the most versatile standard grades of Redco™ Cast Nylon. Redco™ Nylon MD-Oil provides the same high Compressive Strength and Load Bearing properties of MD filled, with all the advantages of a Liquid Lubricant. Redco™ Nylon MD-Oil is especially suited for High Load - Low RPM applications, but is a superior replacement for MD in many heavy-duty friction generating applications.

STANDARD COLOR: Dark Navy Blue

STANDARD SHEET SIZE: 2'x4', 3'x4', 4'x4', 4'x10' STANDARD SHEET THICKNESSES: 1/4" to 3"

STANDARD ROD LENGTH: 2' or 4' STANDARD ROD DIAMETER: 2"-12"

Tubular Bar Available In Custom O.D. And I.D. Combinations

TYPICAL APPLICATIONS:

Pillow blocks, trunnion bearings, rope sheaves, pulleys, sprockets, slipper pads, dryer bushings, etc.

REDCO™ SL

Redco™ Nylon SL offers a very low coefficient of friction with superior wear resistance. Redco™ Nylon SL is used for complex applications where external lubrication is difficult or impossible. Also providing in excess of 5 times longer part life than other lubricated materials. Redco™ Nylon SL offers significant savings in machine maintenance and down time costs. As well, it provides added assurance of part life in friction applications where other cast nylons may fail.

STANDARD COLOR: Dark Grey

STANDARD SHEET SIZE: 2'x4', 3'x4', 4'x4', 4'x10' STANDARD SHEET THICKNESSES: 1/4" to 3"

STANDARD ROD LENGTH: 2' or 4' STANDARD ROD DIAMETER: 2"-12"

Tubular Bar Available In Custom O.D. And I.D. Combinations

TYPICAL APPLICATIONS:

Wear strips, bearings / bushings, abrasion pads, rollers, guide rails, star wheels (bottling plants), valve seats, etc.

Available Grades

REDCO™ GLASS FILLED

Redco™ Glass Filled is chemically formulated copolymer designed to offer an engineering material with the high tensile and compressive properties of cast nylon, coupled with the impact and wear resistance of polyurethane. Offered in 3 specific grades, Redco™ Glass Filled has proven successful for the most demanding of industrial applications, and is custom formulated in one of the three following grades:

REDCO™ GLASS FILLED:

The unfilled, or "natural" grade of material, is yellow in color and displays exceedingly high impact resistance and tensile properties. For use in environments including: shock, abrasion, vibration, impact, moisture and absorption.

REDCO™ GLASS FILLED OIL:

Using the same proprietary process as our Redco™ Nylon Oil, our liquid lubrication impregnated within the polymer chain offers excellent surface lubricity. For use in environments including: increased wear, moisture absorption, and increased abrasion.

REDCO™ GLASS FILLED SL:

The impact resistance of the Redco™ Glass Filled copolymer with the wear resistance of Redco™ SL (solid lubricant) resulting in the longest lasting material for the most aggressive industrial applications. For use in environments including: Extreme wear, extreme abrasion.

STANDARD SHEET SIZE: 2'x4', 3'x4', 4'x4', 4'x10'

STANDARD SHEET THICKNESSES: 0.375" - 4"

STANDARD ROD LENGTH: 24" / 48"

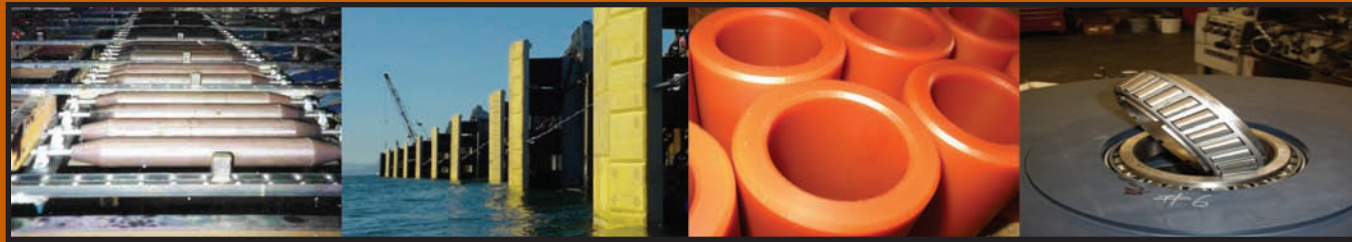
STANDARD ROD DIAMETER: 2"-12"

Tubular Bar Available In Custom O.D. And I.D. Combinations

TYPICAL APPLICATIONS:

Gears, sprockets, power transmission components, extreme outdoor environments, valve seats back-up rings, butterfly valves, stem bushings, bearing blocks, impact pads, torsion couplings, etc.

High Load Bearing... Easily Machined..... Wear Resistant...



PLASTIC SOLUTIONS

Specialty Grades

REDCO™ EXTRUDED

The First Nylon available in sheet, rod and tube, Redco™ Extruded (6/6 Nylon) is the most widely used of the Nylons. Redco™ Extruded offers the highest rigidity, compressive strength and melting point of any unmodified extruded Nylon.

STANDARD COLORS: Natural (White) and Black

STANDARD SHEET SIZE: 2'x4', 3'x4', 4'x4', 4'x10' STANDARD SHEET THICKNESSES: 0.031" - 2"

STANDARD ROD LENGTH: 8' or 10' STANDARD ROD DIAMETER: 1/8" - 2"

Tubular Bar Available In Custom O.D. And I.D. Combinations

TYPICAL APPLICATIONS:

Limit Switch, Bearings, Bushings, Sheaves, Rollers, Guides, Wear Plates, Threaded Parts, Sprockets, Power Transmission Components, Plugs, Valves, Couplings, etc.

TUFFKAST

Redco™ Tuffkast has a combination of strength and resilience resulting in a high performance plastic that offers excellent wear and abrasion resistance with rigidity, minimal water absorption and superior impact values. Ideal for harsh environments where excessive weight, water saturation, abrasion, shock and impact are factors.

GRADES AVAILABLE: TUFFKAST 025, TUFFKAST 015 OIL, TUFFKAST 010 SOLID LUBRICANT

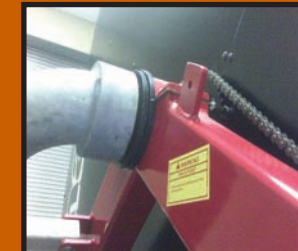
STANDARD SHEET SIZE: 2'x4', 3'x4', 4'x4', 4'x10' STANDARD SHEET THICKNESSES: 1/4" to 3"

STANDARD ROD LENGTH: 2' or 4' STANDARD ROD DIAMETER: 2"-12"

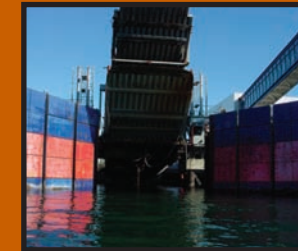
Tubular Bar Available In Custom O.D. And I.D. Combinations

TYPICAL APPLICATIONS:

Wear Plates, Dock Fenders/Pads, Valve Seals, Sprockets, Bearings, Bushings, Sheaves, Washers, Spacers, Insulators, Clevis Pins, Ring Gears, Barker Parts, Canter Parts, Carriage Parts, Gland Bushings, Sliding Bearings, Chip-n-saw Parts, Forklift Mast Slides, Log Handling Parts, Bushings for Cylinders, Tubes, etc.



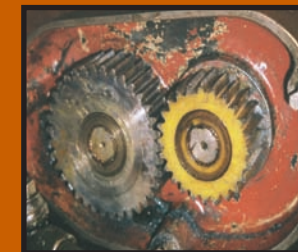
Drag Hose Wheel Drum Bearing



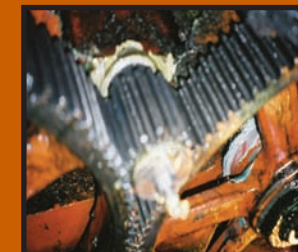
Tuffkast Dock Fenders



Tuffkast Dock Fenders



Tuffkast Gear



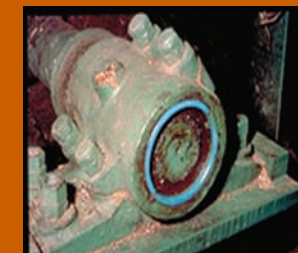
Moly Gear



Kiln Cart Wheel Bushing



Pulley System



Sawmill Bushing



Pulp Mill Dryer Gears



Pulp and Paper Machine Gear



Nippon Chip Steam Splitter Gear



Tuffkast Conveyor Rollers

APPLICATIONS

Gears, Seals, Washers, Insulators, Sliding Bearings, Valves, Abrasion Pads, Power Transmission Components, Trunnion Bearings, Rope Sheaves, Pulleys, Slipper Pads, Dryer Bushings, Fittings, Tubes, etc..

Wood Processing

Wear Plates, Sprockets, Bearings, Bushings, Washers, Spacers, Insulators, Clevis Pins, Barker Parts, Canter parts, Carriage Parts, Chip-n-saw Parts, Log Handling Parts, Gears, Stem Bushings, Bearing Blocks, Wear Strips, Rollers, Guide Rails, Trunnion Bushings

Pulp & Paper

Bushings, Washers, Spacers, Insulators, Clevis Pins, Barker Parts, Gland Bushings, Sliding Bearings, Log Handling Parts, Valve Seals, Rings, Butterfly Valves, Bearing Blocks, Rollers, Guide Rails, Trunnion Bearings, Rope Sheaves, Slipper Pads, Fittings, Valve Seals

Mining

Wear Plates, Bearings, Washers, Bushings, Spacers, Insulators, Clevis Pins, Sliding Bearings, Gears, Bearings Blocks, Wear Strips, Rollers, Guide Rails, Pulleys

Marine

Dock Fenders, Dock Pads, Washers, Spacers, Insulators, Clevis Pins, Sliding Bearings, Gears, Bearings Blocks, Wear Strips, Rollers, Guide Rails, Rope Sheaves, Pulleys

Food & Beverage Processing

Fittings, Pulleys, Guide Rails, Rollers, Wear Strips, Gears, Sliding Bearings, Spacers, Star Wheels, Pillow Blocks

Material Handling

Pulleys, Rope Sheaves, Trunnion Bearings, Rollers, Wear Strips, Stem Bushings, Power Transmission Components, Forklift Mast Slides, Ring Gears, Gland Bushings, Wear Plates, Log Handling Parts

Oil Drilling & Exploration

Fittings, Slipper Pads, Ball Valves

Agriculture

Star Wheels, Wear Plates, Sprockets, Gland Bushings,

Recreational Equipment

Pulleys, Sliding Bearings

Manufacturing

Bearings, Sprockets, Rollers

Medical • Automotive • Semi-Conductor • Textiles • Chemical
Waste Water Treatment • Aerospace and Flight

CUSTOM DESIGN & FABRICATION

(Please Refer to Our Website for Physical Properties and Specifications)

Contact Your Local Representative Today



INNOVATIVE SOLUTIONS IN PLASTIC



We cannot anticipate all conditions under which this information and our products or the products of other manufacturers in combination with our products may be used. We accept no responsibility for results obtained by the application of this or the safety and suitability of our products, whether alone or in combination with other products. Users are advised to make their own test to determine the safety and suitability of each such product or product combination for their own purposes. Unless otherwise agreed in writing, we sell the products without warranty, and buyers and users assume all responsibility and liability for loss or damage arising from the handling and use of our products, whether used alone or in combination with other products. For most recent technical information, phone 360 225 1491 in USA or 604 607 6000 in Canada.